



# ENERGY EFFICIENCY CONSULTANCY SERVICES

1ST JUNE 2020 - 31ST MAY 2024

N8C FRAMEWORK GUIDE



Trusted procurement for  
better buildings and homes

[WWW.LHC.GOV.UK](http://WWW.LHC.GOV.UK)



# ABOUT THIS FRAMEWORK

LHC supports the governments future targets for Zero Carbon, providing Energy Efficiency Consultancy services, to complement LHCs eighth edition of our Energy Efficiency Measures and Associated Works Framework Agreement (N8).

Focus is on the fabric of the property, retrofitting of existing buildings with energy measures and whole house refurbishments to improve building quality standards. These integrated solutions are packed with innovative new technology, representing 30 years' experience of procuring retrofit solutions for publicly owned housing to improve their energy performance.

As a minimum, Tenderers for N8C are required to have the capability and experience to provide consultancy services for the delivery of the following 21 energy efficiency measures, which form the key services for the N8 Framework Agreement:

• External wall insulation	• Cavity wall insulation	• Internal wall insulation
• Insulation materials (Loft)	• Biomass boilers	• Solar PV with battery storage
• Air to water heat pumps	• District heating interface units	• Traditional boilers
• Rainscreen and cladding	• Combined heat & power (CHP) or combined cooling & heat & power (CCHP)	• Gas absorption heat pumps
• Boiler optimisation technologies	• Lighting controls	• EV charging infrastructure
• Solar thermal systems	• Building energy management systems	• Floor insulation
• Ground source heat pumps	• Commercial boilers	• Electric heaters

The tender was carried out in strict accordance with the EU Procurement Directive and UK public sector procurement rules.



LHC provides OJEU compliant frameworks, which can be used by local authorities, social landlords and other public sector bodies to procure works, products and services for the construction, refurbishment and maintenance of social housing, schools and public buildings.

Our activity is guided by our Executive Committee which is made up of Local Authorities and Housing Associations from across England.

Established in 1966, LHC are acknowledged as one of the most experienced and respected providers of procurement frameworks in the construction sector.

LHC  
4th Floor | 2 Vine Street | Uxbridge | UB8 1QE

01895 274 800  
info@lhc.gov.uk

@lhcprocurement  
linkedin.com/company/lhc



# ABOUT THIS FRAMEWORK

The Energy Efficiency and Consultancy Services (N8C) framework has been awarded to 4 different suppliers. The framework will run for a maximum of four years. However, individual call-off projects can be completed beyond the four-year duration of the framework as long as a contract is in place prior to the framework expiry date. The term of the framework is from **1st June 2020 to 31st May 2024**.

In terms of the core services required under this Framework, Appointed Companies will be providing the following:

### Building Energy Management

- > Building Energy Policy & Strategy Development
- > Energy Surveys and Audits
- > Monitoring and Targeting
- > Independent Report on Metering Arrangements (IRMA)
- > Chartered Surveyors Reports
- > Domestic and non-domestic BREEAM Assessments (for existing buildings)
- > Funding and Finance

### Project Management

- > Project Manager
- > Clerk of Works
- > Health & Safety
- > Principle Design duties
- > Health & Safety Advisors



### Asset Management, Project Specification

- > Energy Stock Condition Surveys and Reports
- > Product Specification and Procurement
- > Quantity Surveyors

### Building Energy Certificates

- > Display Energy Certificates (DEC) and Advisory Report (AR)
- > Energy Performance Certificates (EPC) Domestic
- > Energy Performance Certificates (EPC) Non-Domestic



A holistic approach to these services should be used to provide the LHC client with the services that they require.

- > Domestic dwellings
- > Managed leasehold properties
- > Sheltered housing and supported housing and care home properties
- > Schools and colleges market rent properties
- > Universities, student accommodation; and other tenures
- > Leisure facilities
- > Public offices (non 24/7 hour operation)
- > Multi-functional/multi-use (24/7 hour operation)
- > Other properties owned or managed by a public body framework end users

# DETAILS ABOUT PRODUCTS AND SERVICES

### Quality 60%

The Technical/Quality questions in the ITT are as follows:

- > Project case study - 15%
- > Framework management and capability - 13%
- > Project resources - 10%
- > Regional capability - 7%
- > CDM compliance - 8%
- > Social value - 7%

### Price 40%

The elements of cost used for this pricing model is as follows:

- > Schedule of Rates e.g. Building Energy Audits, Building Certificates (EPC), Clerk of Works fees etc.
- > Daily and hourly consultancy rates
- > Project management fees
- > Regional uplifts

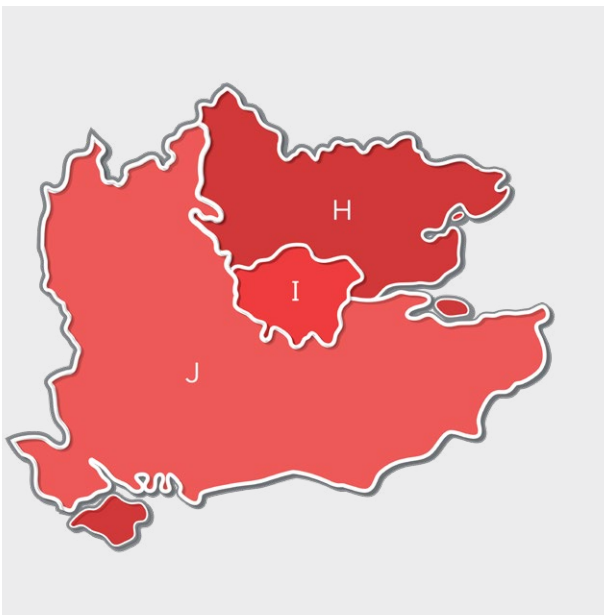


### Appointed Companies\*

The Appointed Companies below have been appointed, due to their experience in providing consultancy services within energy efficiency covering London, South East and East of England.

	J	I	H
> Currie and Brown	✓	✓	
> Drees & Sommer	✓	✓	✓
> GEP Environmental	✓	✓	
> Rybka	✓	✓	✓

\*LISTED ALPHABETICALLY



# AWARD OPTIONS

The Framework allows clients the option of:

**Direct award** without further competition, where all terms and conditions of the call-off project are within the terms and conditions of the framework

OR

**Mini-competition**, where terms and conditions of the call-off may vary or be modified from the framework or at the choice of the Client.

When calling off projects, clients can use any one of a range of standard forms of building contract including JCT/SBCC, NEC/NEC4, ACE, PPC, TPC, FAC1, or their own in-house agreement.

## Eligibility

LHC is a not-for-profit organisation, governed by public law and a central purchasing body providing procurement services. Over 200 publicly funded organisations throughout England use LHC frameworks to procure works, goods and services to construct, refurbish and maintain social housing, schools and public buildings:

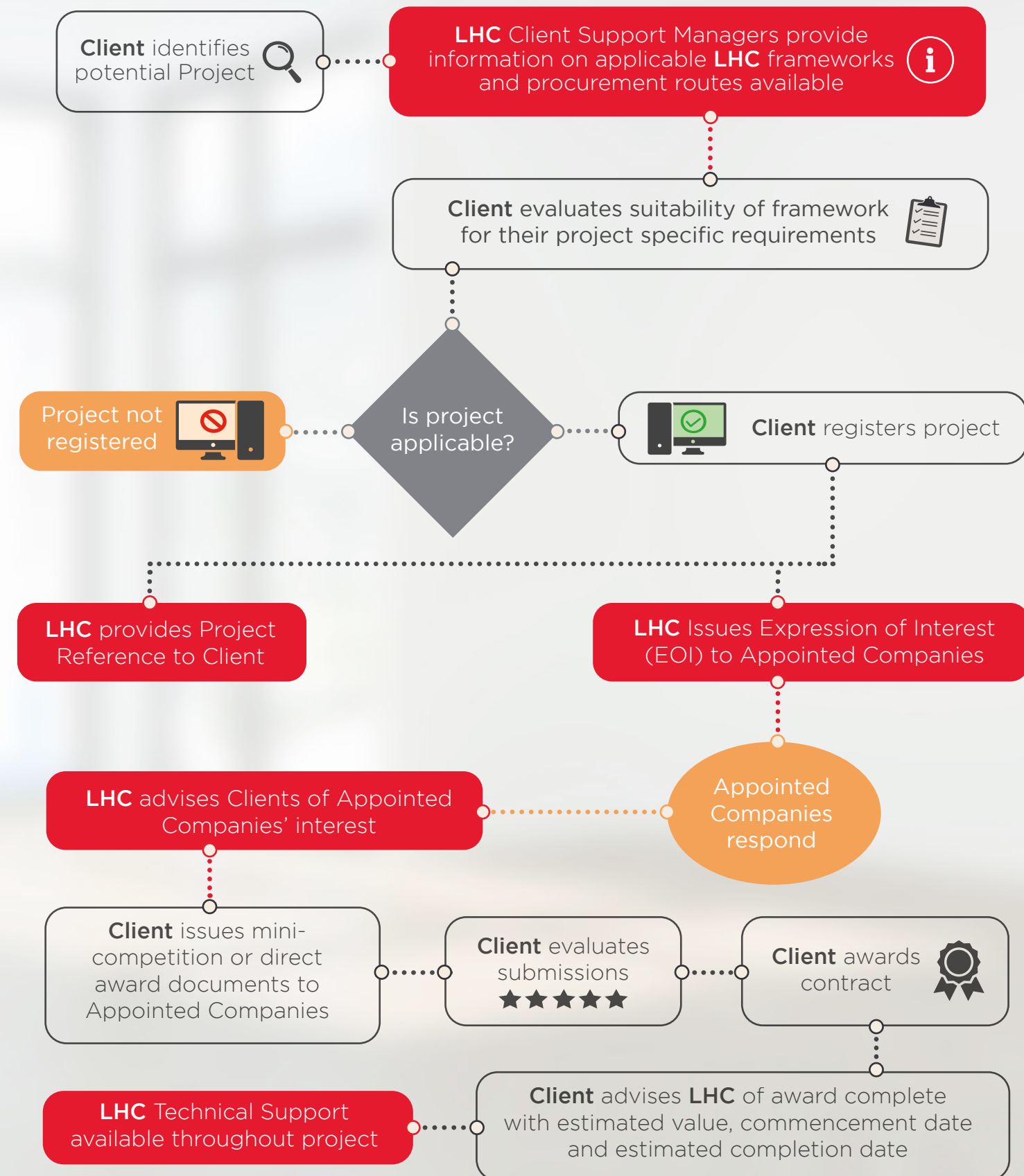
- > Local Authorities and any subsidiaries and joint-venture vehicles of those Local Authorities.
- > Registered Social Landlords (RSL), Tenant Management Organisations (TMOs) & Arm's Length Management Organisations (ALMOs)
- > Health Authorities, Councils, Boards and Trusts
- > Publicly Funded Schools
- > Universities and Further Education Establishments
- > Colleges
- > Police Forces
- > Fire and Rescue services
- > Registered Charities

Details of those contracting authorities identified are listed at [www.lhc.gov.uk/24/](http://www.lhc.gov.uk/24/)

## General Terms and Conditions

LHC uses the FAC-1 standard form of contract to manage our frameworks. The LHC pro forma, which should be read in conjunction with the FAC-1 in published form, details the terms and conditions that govern the operation of the framework, including the procedures to call off projects under the framework. A free copy of the LHC proforma is available upon request. The FAC-1 in standard published form can be purchased at a negotiated rate from ACA, by emailing [office@acarchitects.co.uk](mailto:office@acarchitects.co.uk) and quoting discount code reference: LHCFAC2516102017.

# THE PROCESS OF USING OUR FRAMEWORK





**Trusted procurement for  
better buildings and homes**



01895 274 850



[www.lhc.gov.uk](http://www.lhc.gov.uk)



[info@lhc.gov.uk](mailto:info@lhc.gov.uk)



[@lhcprocurement](https://twitter.com/lhcprocurement)



[linkedin.com/company/lhc](https://www.linkedin.com/company/lhc)